

[HF36 HOSEx1-1/2"]

2.5" Female Hose x 1-1/2" Male Brass reducer



Cast Brass reducing adapter that changes the size and/or thread configuration. The female thread is larger than the male thread and will come with either pin lug or rocker lug.

SIZING: 2-1/2" (65 mm) x 1-1/2" (38 mm)

FINISH: Brass

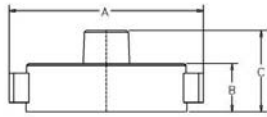
OPTIONS: Chrome

STOCKING CONFIGURATION:

- HF36 BCT x NPSH
- HF36 CSA x NPSH
- HF36 CSA x NPT
- HF36 CLVD x NST
- HF36 NPSH x NST
- HF36 NSST x NPSH
- HF36 NST x NST
- HF36 NST x NPSH
- HF36 NST x NYFD
- HF36 NYCORP x NST
- HF36 NYFD x NST
- HF36 NYFD x NYFD
- HF36 WCT x NPSH
- HF36 DET x NST
- HF36 QST x NPSH
- HF36 NST x NPT
- HF36 NYCORP x NPT
- HF36 NYFD x NPT

OTHER CONFIGURATIONS: Please see factory for availability

Dimensions:



A= 4.44" (112.8mm)

B= 1.03" (26.09mm)

C= 1.76" (44.83mm)

[HF57 BR HOSEXNPT]

2 1/2" F Hose Thread x M NPT Brass Adapter



Hexagon brass hose adapter. Female regional hose thread x Male NPT.

Size : 2 1/2" x 2 1/2". Specify regional hose thread.

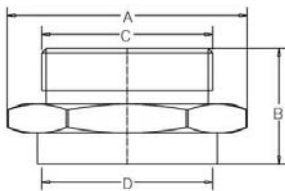
Finish : Cast Brass

Optional Finish : Chrome

HOSE THREADS AVAILABLE: NST

OTHER HOSE THREADS: PLEASE CONTACT FACTORY

Dimensions:



A=3.60" (91.60mm)

B=2.08" (52.85mm)

C= 2.85" (72.42mm)

D=3.06" (77.86mm)

[HF57 BR 2 1/2"]

2 1/2" FNPT x M Hose Thread Brass Adapter



Hexagon brass hose adapter. Female NPT x Male regional hose thread.

Size : 2 1/2" x 2 1/2". Specify regional hose thread.

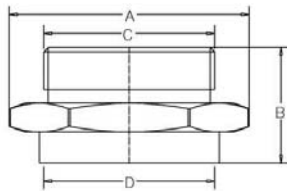
Finish : Cast Brass

Optional Finish : Chrome

HOSE THREADS AVAILABLE: CSA, BCT, WCT, QST, NSST, NPSH, NST, Pittsburgh, New York Corp. and New York Fire Department

OTHER HOSE THREADS: PLEASE CONTACT FACTORY

Dimensions:



A=3.60" (91.60mm)

B=2.08" (52.85mm)

C= Subject to Hose Thread

D=3.06" (77.86mm)

[HF57 BR 1 1/2" HOSEXNPT]

1 1/2" F Hose Thread x M NPT Brass Adapter



Hexagon brass hose adapter. Female regional hose thread x Male NPT.

Size: 1 1/2" x 1 1/2". Specify regional hose thread.

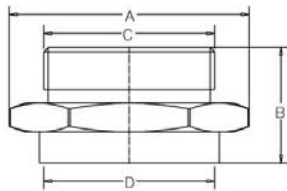
Finish : Cast Brass

Optional Finish : Chrome

HOSE THREADS AVAILABLE: NPSH, NST and New York Fire Department

OTHER HOSE THREADS: PLEASE CONTACT FACTORY

Dimensions:



A= 2.30" (58.43mm)

B= 1.42" (36.05mm)

C= 1.99" (50.59mm)

D= 2.01" (51.30mm)

[HF57 BR 1 1/2"]

1 1/2" FNPT x M Hose Thread Brass Adapter



Hexagon brass hose adapter. Female NPT x Male regional hose thread.

Size: 1 1/2" x 1 1/2". Specify regional hose thread.

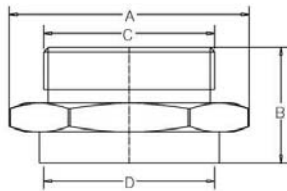
Finish : Cast Brass

Optional Finish : Chrome

HOSE THREADS AVAILABLE: NPSH, NST and New York Fire Department

OTHER HOSE THREADS: PLEASE CONTACT FACTORY

Dimensions:



A= 2.30" (58.43mm)

B= 1.42" (36.05mm)

C= 1.99" (50.59mm)

D= 2.01" (51.30mm)

[HF55 BR 1 1/2"]

1 1/2" MNPT x M Hose Thread Brass Adapter



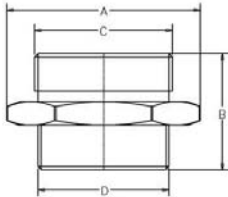
Hexagon cast brass hose nipple, 1.5" (38mm) male NPT x 1.5" (38mm) male regional hose thread. Specify regional hose thread.

Finish : Cast brass

Optional Finish : Chrome

HOSE THREADS AVAILABLE: NPSH, NST and New York Fire Department

Dimensions:



A= 2.33" (59.06mm)

B= 1.85"(47.01mm)

C= 1.90" (48.35mm)

D= Subject to Hose Thread

[HF58 BR CAST]

2 1/2" Cast Brass Snoot and Swivel



Cast brass snoot and swivel used to connect fire hose to a standpipe or sprinkler system. 2 1/2" FNPT solid x 2 1/2" female regional hose thread swivel adapter. Specify regional hose thread.

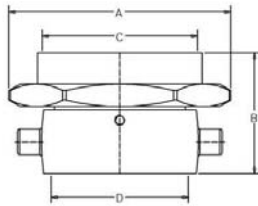
Size : 2 1/2" (65mm) x 2 1/2" (65mm)

Finish : Cast Brass

Optional Finish : Chrome or Polish Brass

HOSE THREADS AVAILABLE: CSA, BCT, WCT, QST, NSST, NPSH, NST, Louisville, Cleveland, Chicago, Pittsburgh, New Cincinnati, New York Corp., New York Fire Department, Richmond and Raleigh

Dimensions:



A= 2.70" (68.75mm)

B= 4.07" (103mm)

C= 3.14" (79.84mm)

D= Subject to Host Thread