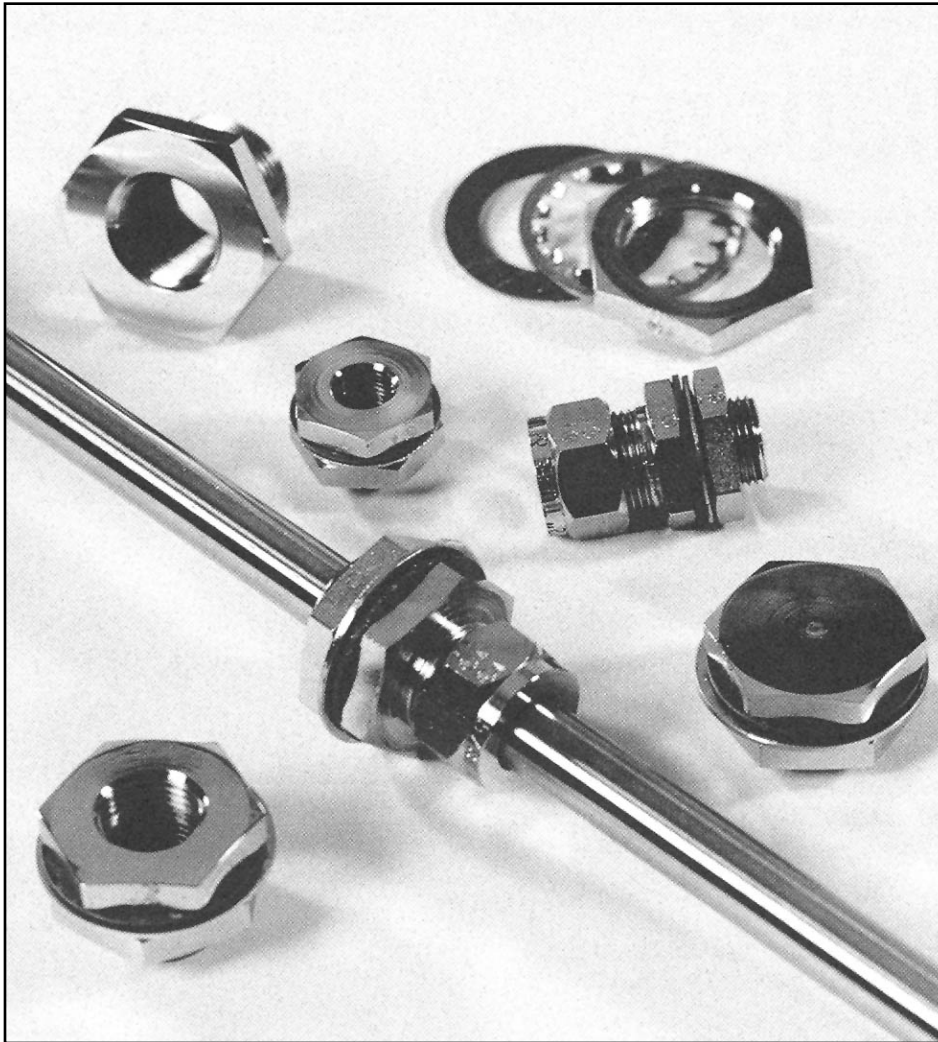




EVERGREEN



ACCESSORIES FOR FIRE EQUIPMENT INSTALLERS

“EVERGREEN

simplifies installation

Evergreen Tool Company offers several installation accessories that make the job of sealing penetrations and patching unwanted holes a lot faster, easier and less costly.

The sealing of pipe, tubing and conduit penetrations no longer requires the use of portable welding equipment at the job site.

The “Evergreen Quik-Seal” Adapter produces a weld-tight seal with the structural integrity and stability of a welded joint without damage, distortion, inconvenience or the cost of in-field welding.

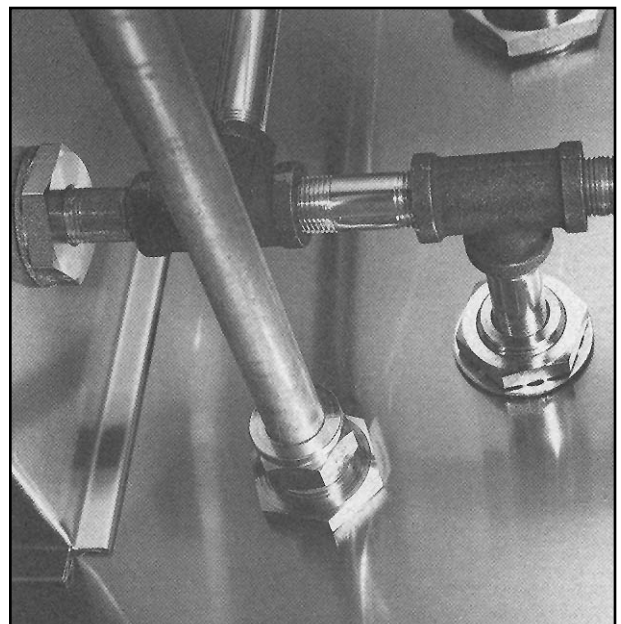
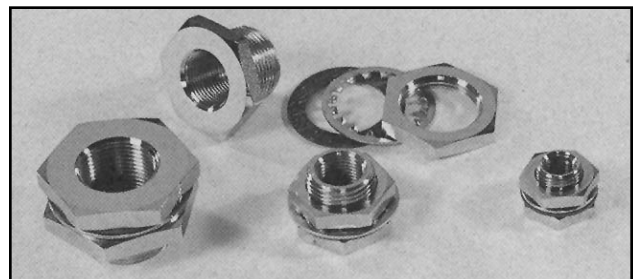
An even faster method of closure is the “Evergreen Compression Seal.” The pipe, tubing or EMT conduit is slid through the installed fitting and the compression seal nut is tightened to produce the same weld-tight seal. Simple as that. No cutting. No threading.

If you have ever changed a fire suppression system and left several holes, moved a fire protection nozzle and left an unwanted hole, drilled a hole at the wrong location or used a hood with previously drilled holes, then you need an original “Evergreen Quik-Patch.” It’s as strong and secure as a welded patch, a lot easier and more attractive.

Look for the Evergreen logo and the UL symbol for original, high-quality fittings.



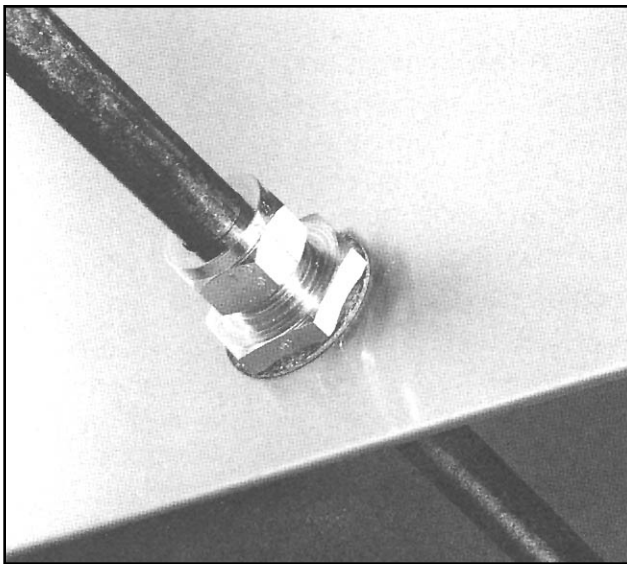
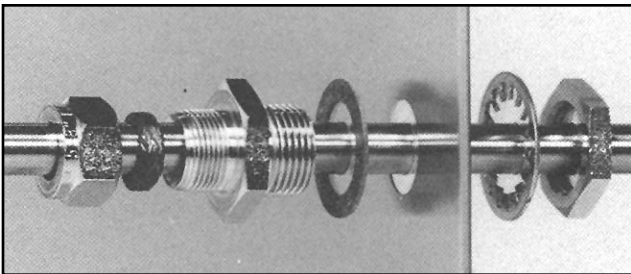
Quik-Seal” Adapter



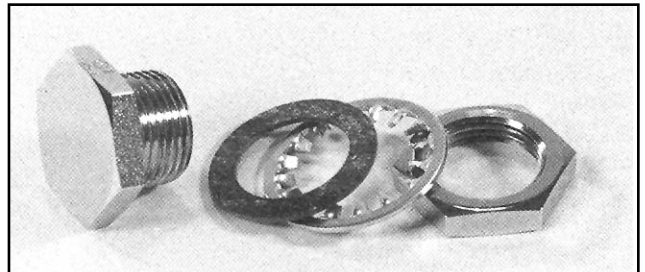
“EVERGREEN

Compression Seal”

PATENT NO. 5,037,140



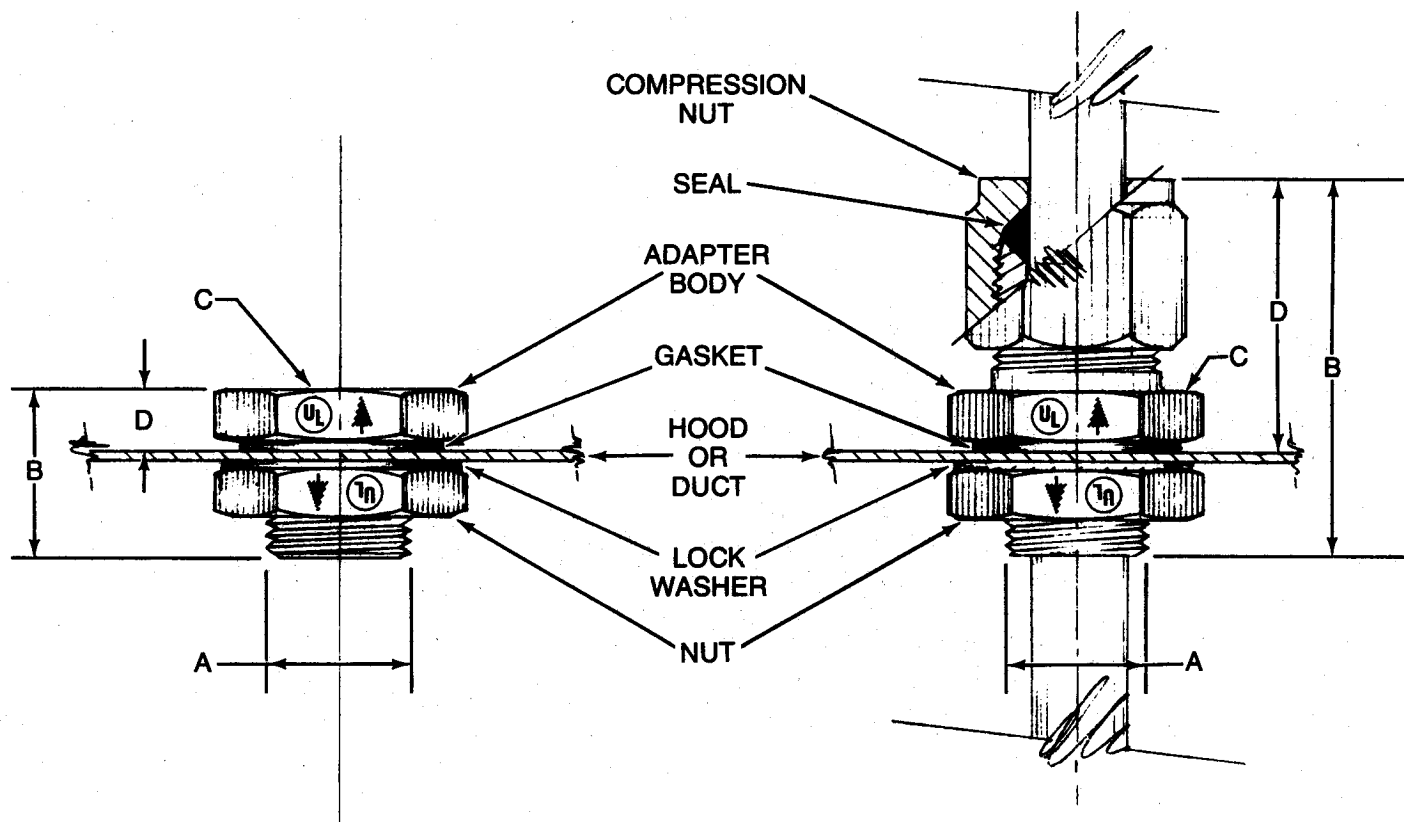
Quik-Patch””®



OTHER APPLICATIONS

- Industrial Fire Suppression System Installations such as penetrations in spray booths and dip tanks.
- Halon System Installations for nozzle escutcheons or where pipe penetrations must be sealed.
- Vehicle System Installations.
- Installation of Instrumentation Probes.

DESIGN DATA



**“Evergreen Quik-Seals”
“Evergreen Quik-Patch”**

Size	Part No.	Hole Size		C	D
		A	B		
1/4" Pipe	218	3/4"	0.88	1.13 hex	0.31
3/8" Pipe	170	1-1/8"	1.00	1.50 hex	0.38
1/2" Pipe	171	1-1/8"	1.13	1.50 hex	0.38
3/4" Pipe	172	1-3/8"	1.25	1.88 hex	0.38
1" Pipe	213	1-5/8"	1.50	2.25 hex	0.44
Quik-Patch	205	1-1/8"	1.00	1.50 hex	0.38

“Evergreen Compression Seals”

Size	Part No.	Hole Size		C	D
		A	B		
3/8" Tube	300	3/4"	1.75	1.13 hex	1.12
1/2" Tube & 1/4" Pipe	301	3/4"	1.75	1.13 hex	1.12
5/8" Tube & 3/8" Pipe	302	1-1/8"	1.87	1.50 hex	1.25
1/2" EMT Conduit	303	1-1/8"	2.00	1.50 hex	1.30
1/2" Pipe	304	1-1/8"	2.12	1.50 hex	1.40
3/4" Pipe	305	1-3/8"	2.25	1.88 hex	1.55
1" Pipe	306	1-5/8"	2.38	2.25 hex	1.63

DESIGN SPECIFICATIONS

The penetration shall be sealed with an “EVERGREEN QUIK-SEAL,” “QUIK-PATCH” or “EVERGREEN COMPRESSION SEAL” as manufactured by the Evergreen Tool Co., Inc. It shall be UL listed under the classification “Hood and Duct Accessories.” It shall bear the UL symbol and the manufacturer’s logo.

Installation shall be in conformance with the manufacturer’s UL listed installation instructions and in conformance with the requirements of NFPA Standard No. 96 and shall also meet the approval of the authority having jurisdiction.

The fitting shall be manufactured of carbon

steel and shall be nickel/chrome plated. It shall have a high-temperature gasket to make a liquid-tight seal between the fitting and hood or duct surface and be secured with a lockwasher and nut.

For Compression Seal: The fitting shall also be provided with a high-temperature, pliable compression seal and compression nut to make a liquid-tight seal around the outside wall of tubing, EMT conduit or pipe and the fitting.

For Quik-Seal: The fitting shall also be provided with internal pipe threads to make a leak-tight joint between the threaded ends of pipe at the penetration.

SPECIAL FEATURES

“Evergreen Quik-Seals,” “Compression Seals” and “Quik-Patches” are:

- designed to stop leakage of grease from inside the hood or duct to the outside of the hood or duct at the hole created for the fire suppression system piping.
- tested and listed with Underwriters Laboratories under the classification “Hood and Duct Accessories” and compatible with UL listed fire suppression systems.
- in conformance with the requirements of NFPA Standard No. 96.
- made of solid machined steel for maximum strength and tolerance of high temperature.
- chrome plated for corrosion resistance, attractive appearance and ease of cleaning.
- structural support for the system piping making the installation stronger and reducing the need for pipe hangers.
- simple, easy and inexpensive to install compared to welding and polishing.

“Evergreen Quik-Seals” are:

- available in 5 common sizes from 1/4” pipe to 1” pipe.
- provided with internal pipe threads to couple the pipe at the penetration.
- tested to an internal pressure of 5000 psi.

“Evergreen Compression Seals” are:

- available in 7 common sizes for tubing, pipe and EMT conduit.
- a liquid-tight seal around the outside of the tubing, pipe or EMT conduit thus eliminating cutting or threading the pipe at the point of penetration. It makes the installation faster and easier.
- tested to a differential pressure of over 100 psi from one side of the installed fitting to the other. (The pressure of the system is contained within the tubing or pipe which is not cut with this fitting.)

“Quik-Patches” are:

- constructed without holes or internal threads. They are used to seal or patch existing penetrations.



EVERGREEN

EVERGREEN TOOL CO., INC., 5200 13TH St., Menominee, MI 49858

PHONE (906) 863-7064
FAX (906) 863-8477

www.evergreentool.com
sales@evergreentool.com

