

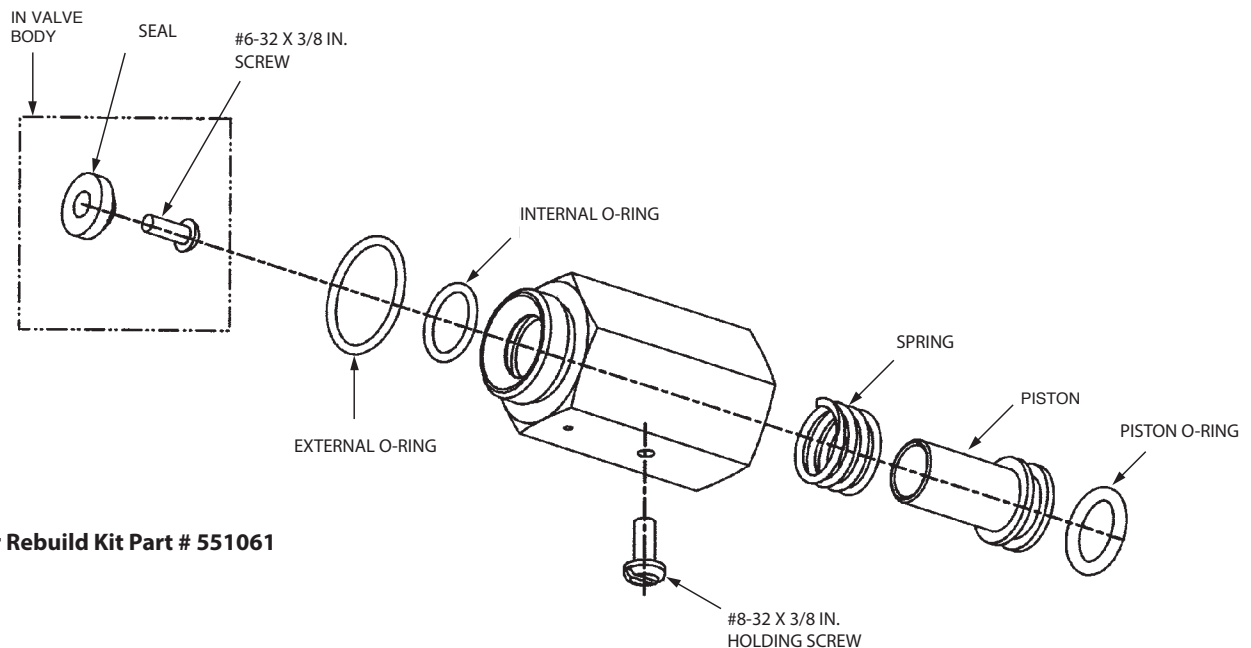
## INSTRUCTIONS FOR REBUILDING VALVE PRESSURE REGULATOR ON PROTEX II™ CYLINDER VALVES

The following steps are necessary to properly rebuild the ProTex II™ Pressure Regulator.

1. Remove the pressure regulator from the cylinder valve.
2. Remove 8-32 x 3/8 in. long pan head screw from body of regulator. Discard.
3. Using a non-metallic rod (a plastic pen or wooden dowel works fine), push piston out of regulator body. Note: End of piston is visible on valve end of the regulator. Take care not to scratch the internal regulator body. Discard spring.
4. Remove all used O-rings: Discard all.
  - Piston O-ring
  - External thread O-ring
  - Internal O-ring
5. Carefully clean piston and internal regulator surface.
6. In Valve Body: Remove 6-32 x 3/8 in. long pan head screw and seal. Discard both.
7. Install new seal and 6-32 x 3/8 in. long pan head screw into valve body. Tighten until screw bottoms out in valve body.
8. Lubricate all new O-rings for pressure regulator with O-ring lubricant.
9. Reinstall internal O-ring, external O-ring, and piston O-ring. Note: Piston O-ring and internal O-ring are very similar in size. To determine the correct one to use, note the thickness of each. The piston O-ring is thicker (1/8 in.) than the internal O-ring (1/16 in.).
10. Insert spring and piston into regulator body.
11. Using a non-metallic rod, push piston into regulator body far enough to completely compress the spring. Hold in place and install 6-32 x 3/8 in. holding screw into threaded hole on side of regulator. Screw must be threaded completely into body. Note: Make certain screw is holding the piston in place but not actually forced into the side of the piston. Piston must be free to move in the direction of the valve body.
12. Reinstall rebuilt regulator into valve body. Hand tighten.

Copyright © 2023 Heiser Logistics. All rights reserved.

ProTex II™, and the product names listed in this material are marks and/or registered marks. Unauthorized use is strictly prohibited.



**Regulator Rebuild Kit Part # 551061**